



**TAG METALS USA**

VALENCIA SPORTS GROUP  
28744 WITHERSPOON PKWY  
VALENCIA, CA 91355

TEL: (661) 257-2756

FAX: (661) 257-8633

WEB: [www.TAGMETALSRACING.com](http://www.TAGMETALSRACING.com)





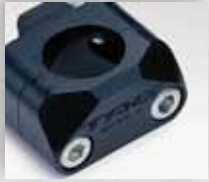
**4-5**  
OFF-ROAD & ATV  
SPROCKETS



**6-7**  
OFF-ROAD  
IMAGE SPREAD



**8-9**  
OFF-ROAD & ATV  
HANDLEBARS



**10-11**  
OFF-ROAD & ATV  
BAR MOUNTS



**12-13**  
OFF-ROAD & ATV  
GRIPS



**14-15**  
OFF-ROAD & ATV  
BAR PADS



**16-17**  
ATV  
GLIDE PLATES, BUMPERS



**18-19**  
ANCILLARY  
HATS, T-SHIRTS, HOODIE, UMBRELLA, STICKERS



**20-21**  
OFF-ROAD & ATV  
SPROCKET APPLICATION CHARTS



**22-23**  
OFF-ROAD & ATV  
HANDLEBAR APPLICATION CHARTS





GEICO POWERSPORTS HONDA  
DAN BEARDORN

### TAG METALS SPROCKETS

- \* HARD ANODIZED FOR LONGEVITY
- \* WEIGHS ONLY 0.80 POUNDS
- \* WINNINGEST SPROCKET IN AMA SUPERCROSS
- \* NATURAL AND BLACK COLORS

SPROCKET APPLICATIONS SEE PAGES 20-21



ROCKSTAR ENERGY MAKITA SUZUKI  
MIKE ALESSI





GEICO POWERSPORTS HONDA  
KEVIN WINDAM



GEICO POWERSPORTS HONDA  
BLAKE WHARTON



GEICO POWERSPORTS HONDA  
TREY CANARD



## TAG METALS XT-1 OVERSIZE BRACED HANDLEBAR

THE TAG METALS XT-1 HANDLEBAR FEATURES A TAPERED OUTER WALL THAT GIVES A 1 1/8" CLAMPING DIAMETER AND 7/8" CONTROL ENDS. THIS BRACED DESIGN GIVES INCREASED STRENGTH TO THE HANDLEBAR AND GIVES RIDERS THE LOOK AND FEEL THAT THEY DESIRE WHEN LOOKING FOR BRACED HANDLEBARS.

- \* PATENTED ANTI-VIBRATION ELASTOMER ABSORBS UP TO 40% MORE VIBRATION THAN ANY OTHER HANDLEBAR
- \* AEROSPACE GRADE ALUMINUM
- \* SHOT PEENED FINISH ADDS A COMPRESSIVE OUTER LAYER FOR MAXIMUM DURABILITY
- \* LASER ETCHED POSITIONING GRID
- \* LICENSED UNDER US PATENT NUMBER 5959497

HANDLEBAR APPLICATIONS  
SEE PAGES 22-23



ANTI-VIBRATION  
TECHNOLOGY INSIDE

# XT-1



## TAG METALS T2 OVERSIZE HANDLEBAR

THE TAG METALS T2 HANDLEBAR FEATURES A TAPERED OUTER WALL THAT GIVES A 1 1/8" CLAMPING DIAMETER AND 7/8" CONTROL ENDS. THIS BRACE-LESS DESIGN GIVES EXCELLENT STRENGTH AND MAXIMUM FLEXIBILITY

- \* AEROSPACE GRADE ALUMINUM
- \* SHOT PEENED FINISH ADDS A COMPRESSIVE OUTER LAYER FOR MAXIMUM DURABILITY
- \* LASER ETCHED POSITIONING GRID
- \* BAR PAD INCLUDED (PAD NOT SHOWN)
- \* LICENSED UNDER US PATENT NUMBER 5959497

HANDLEBAR APPLICATIONS  
SEE PAGES 22-23



## TAG METALS X-5 7/8" HANDLEBAR

THE HIGHEST QUALITY OF MATERIALS, CRAFTSMANSHIP AND ENGINEERING ARE UTILIZED TO PRODUCE THE TAG METALS X-5 HANDLEBAR. THE UNIQUE ALLOY HAS A HIGHER YIELD STRENGTH THAN 7075 ALUMINUM WHICH GIVES THIS HANDLEBAR THE EDGE IN THE EVENT OF A SEVERE CRASH.

- \* AEROSPACE GRADE ALUMINUM
- \* SHOT PEENED FINISH ADDS A COMPRESSIVE OUTER LAYER FOR MAXIMUM DURABILITY
- \* LASER ETCHED POSITIONING GRID
- \* KNURLED LEFT GRIP AREA TO HELP REDUCE SLIPPAGE

HANDLEBAR APPLICATIONS  
SEE PAGES 22-23





## TAG METALS OFF-ROAD BAR MOUNTS

### TAG METALS OFF-ROAD UNIVERSAL BAR MOUNT KITS

ALLOWS FITMENT OF T2, XT1 OR ANY OTHER BRAND OF OVERSIZED 1-1/8" BARS TO YOUR OEM 7/8" CLAMPS. PRECISION MACHINED FROM 6061 T6 ALUMINUM.

- \* 7/8" TO 1-1/8" CONVERSION
- \* MACHINED FROM 6061 T6 ALUMINUM
- \* RAISES BARS 2/3" OVER STOCK HEIGHT
- \* SHOULD NOT BE USED WITH RUBBER MOUNTED CLAMPS



### TAG METALS ATV BAR MOUNTS

### TAG METALS ATV BAR MOUNT KITS

ALLOWS FITMENT OF T2, XT1 OR ANY OTHER BRAND OF OVERSIZED 1-1/8" BARS TO YOUR OEM 7/8" CLAMPS. PRECISION MACHINED FROM 6061 T6 ALUMINUM.

- \* MACHINED FROM 6061 T6 ALUMINUM
- \* RAISES BARS 2/3" OVER STOCK HEIGHT
- \* SHOULD NOT BE USED WITH RUBBER MOUNTED CLAMPS
- \* 1-1/8" BARS ONLY



### TAG METALS BAR MOUNT APPLICATIONS

PART #	DESCRIPTION/APPLICATION
4090	T2 OS B-KIT UNI MNT KIT 7/8-OS
4098	T2 OS BAR MNTS ALL BRANDS
4114	T2 ATV OS MNT KIT TRX450R 04-09 400 EX 700
4120	T2 ATV OS MNT KIT LTZ/KFX400 08-09
4122	T2 ATV OS MNT KIT YFZ450 04-08 RAPTOR 250 07-09 LTZ 400 03-07
4126	T2 ATV OS MNT KIT RAP700 07-09 660 01-06 RAPTOR 350 07-09
4128	T2 ATV OS MNT KIT LTR450 06-09



INTRODUCING THE WORLD'S  
**1<sup>ST</sup>**  
GRIP FEATURING  
**Rebound Technology**  
SUSPENSION FOR YOUR HANDS

## TAG METALS REBOUND TECHNOLOGY™ GRIP

A GRIP THAT FIXES A PROBLEM! YEARS OF RESEARCH WENT INTO THE TAG METALS REBOUND TECHNOLOGY GRIP. STARTING WITH THE SAME CONCEPT THAT IS USED WITH MOTORCYCLE SUSPENSION, TAG METALS HAS DEVELOPED THE MOST COMFORTABLE GRIP IN THE WORLD. THIS BREAK-THROUGH WILL ALLOW YOU TO RIDE LONGER (UP TO 40% LONGER) BEFORE FATIGUE OR BLISTERS CAN AFFECT YOU. WHEN YOU ARE RACING, EVERY SINGLE BUMP, RUT, OR JUMP SENDS A SHOCK THROUGH YOUR HANDS AND INTO YOUR ARMS. THIS UNDESIRABLE SHOCK IS TRANSFERRED DIRECTLY TO YOUR ENTIRE MUSCULOSKELETAL SYSTEM WHICH CAN PRODUCE PAIN, FATIGUE, ARM PUMP AND INCREASED WEAR AND TEAR ON YOUR WRISTS. WHEN YOU ARE WORKING SO HARD TO WIN, DOESN'T IT MAKE SENSE TO DO ALL THAT YOU CAN TO REDUCE THESE UNWANTED EFFECTS?

GREY/RED  
PART# G100-02-00  
GREY/BLUE  
PART# G100-03-00  
GREY/BLACK  
PART# G100-05-00

- \* DUAL COMPOUND
- \* THE ONLY GRIP IN THE WORLD WITH REBOUND TECHNOLOGY™
- \* NO MORE BLISTERS
- \* THE MOST SHOCK ABSORPTION
- \* MORE TRACTION THAN ANY OTHER GRIP IN THE WORLD
- \* NO MORE ARM-PUMP WITH 3 LAPS TO GO
- \* THE SOFTEST COMPOUND MATERIAL OF ANY GRIP ON THE MARKET



CRADLE GRIP

## TAG METALS CRADLE GRIP

- \* AVAILABLE IN SOFT AND MEDIUM COMPOUNDS
- \* THICKER DIAMETER FOR MORE VIBRATION DAMPING
- \* HALF-WAFFLE PATTERN
- \* AVAILABLE IN BLACK, GREY, RED & BLUE
- \* UNMATCHED VALUE
- \* THE BEST GRIP IN THE WORLD AT THIS PRICE POINT

PART# G000-02-01	CRADLE MX GRIP SOFT RED
PART# G000-02-02	CRADLE MX GRIP MED RED
PART# G000-03-01	CRADLE MX GRIP SOFT BLUE
PART# G000-03-02	CRADLE MX GRIP MED BLUE
PART# G000-05-01	CRADLE MX GRIP SOFT BLACK
PART# G000-05-02	CRADLE MX GRIP MED BLACK
PART# G000-08-01	CRADLE MX GRIP SOFT GREY
PART# G000-08-02	CRADLE MX GRIP MED GREY



SLIM GRIP

## TAG METALS SLIM GRIP

- \* SLIM DIAMETER FOR MAXIMUM GRIPPAGE
- \* HALF-WAFFLE PATTERN
- \* SOFT AND MEDIUM COMPOUNDS
- \* THE SOFT COMPOUND OFFERS MORE TRACTION AND ABSORPTION THAN ANY OTHER SINGLE COMPOUND GRIP ON THE MARKET
- \* AVAILABLE IN GREY

PART# G087-08-01	SLIM GRIP SOFT LIGHT GREY
PART# G087-08-02	SLIM GRIP MED DARK GREY

### TAG METALS GRIP GLUE

1 oz BOTTLE (10 PACK)  
PART# G010  
ONE SHOT TUBE  
PART# G020



ATV GRIP

## TAG METALS ATV GRIP

- \* AVAILABLE IN SOFT AND MEDIUM COMPOUNDS
- \* THICKER DIAMETER FOR MORE VIBRATION DAMPING
- \* HALF-WAFFLE PATTERN
- \* AVAILABLE IN BLACK, GREY, RED & BLUE
- \* UNMATCHED VALUE
- \* THE BEST GRIP IN THE WORLD AT THIS PRICE POINT

PART# G050-02-01	CRADLE ATV GRIP SOFT RED
PART# G050-02-02	CRADLE ATV GRIP MED RED
PART# G050-03-01	CRADLE ATV GRIP SOFT BLUE
PART# G050-03-02	CRADLE ATV GRIP MED BLUE
PART# G050-05-01	CRADLE ATV GRIP SOFT BLACK
PART# G050-05-02	CRADLE ATV GRIP MED BLACK
PART# G050-08-01	CRADLE ATV GRIP SOFT GREY
PART# G050-08-02	CRADLE ATV GRIP MED GREY

## TAG METALS T2 BAR PADS



A NEW LEVEL OF BAR PAD TECHNOLOGY. DURABLE, IMPACT ABSORBING INJECTION MOLDED RUBBER WRAPPED IN A SLEEK VINYL COVER. FITS ALL OVERSIZE BRACE LESS HANDLEBARS.

- \* INJECTION MOLDED RUBBER WITH STRATEGIC AIR SPACES IS MORE IMPACT ABSORBENT THAN TRADITIONAL FOAM PADS
- \* STAIN RESISTANT, SUB-PRINTED VINYL COVER
- \* FITS ALL OVERSIZE (1-1/8") BRACE LESS HANDLEBARS
- \* AVAILABLE IN BLACK, BLUE GREEN AND RED
- \* PROGRESSIVE STYLING WITH BOLD TAG GRAPHICS

T2 BAR PAD BLACK  
PART# 5000-05



PART# 5000-03

PART# 5000-06

PART# 5000-02

## TAG METALS CROSS BAR PADS

FITS ALL CROSSBAR STYLE HANDLEBARS. SIZES AND COLORS TO FIT BIG BIKES, ATV'S, AND MINIS.

- \* HIGH DENSITY FOAM FOR MAXIMUM IMPACT PROTECTION
- \* GLOSS 20 MIL VINYL PROTECTIVE COVER
- \* STAIN RESISTANT, SUB-PRINTED VINYL COVER
- \* SIZES TO FIT FULL SIZE AND MINI HANDLEBARS
- \* AVAILABLE IN WHITE/SILVER, BLACK/RED, WHITE/GREEN, BLACK/SILVER AND BLACK/BLUE

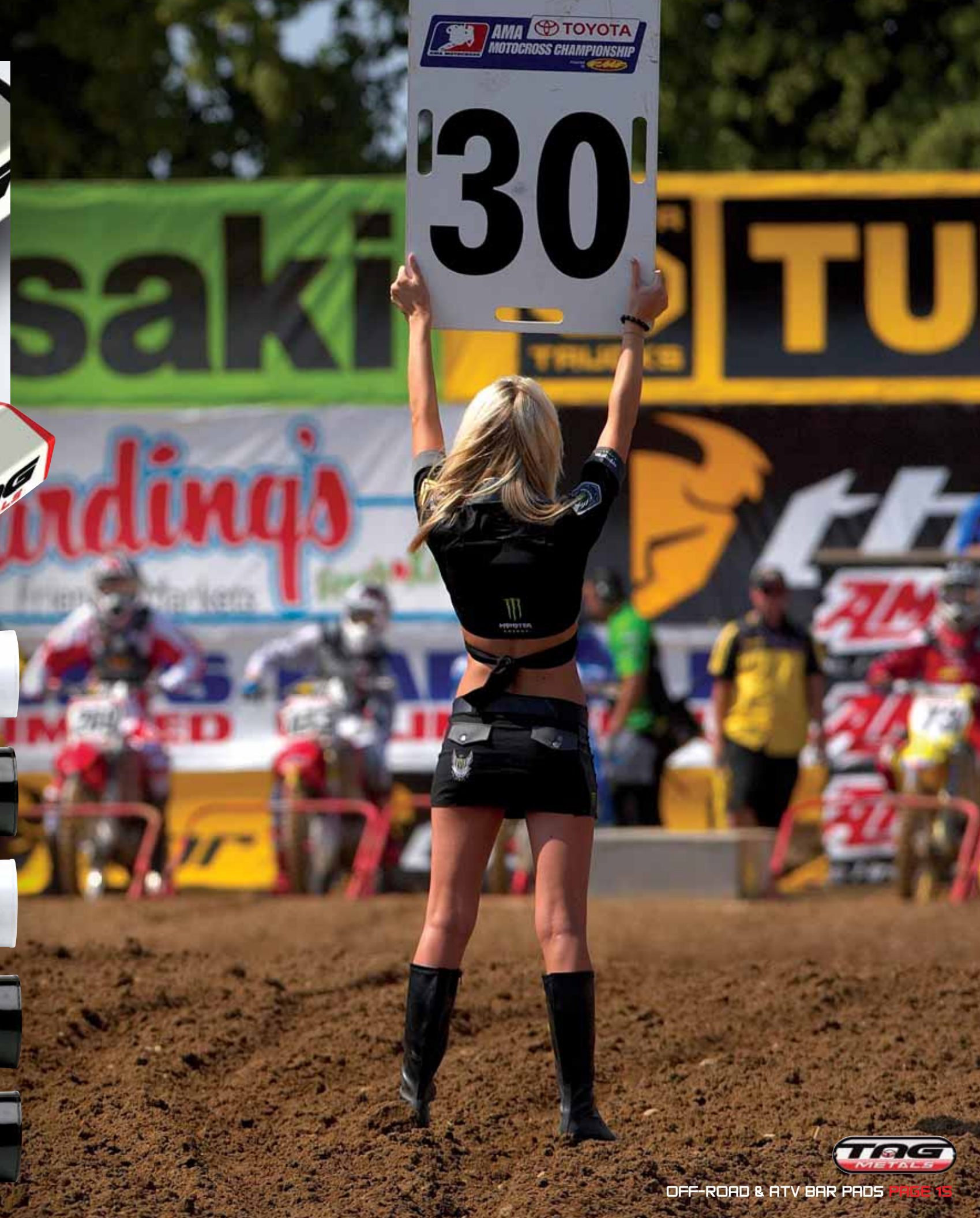
WHT/SILV FULL SIZE PART# 5001-00 MINI PART# 5001-00

BLK/RED FULL SIZE PART# 5001-02 MINI PART# 5001-02

WHT/GRN FULL SIZE PART# 5001-06 MINI PART# 5001-06

BLK/SILV FULL SIZE PART# 5005-00 MINI PART# 5001-05

BLK/BLU FULL SIZE PART# 5001-03 MINI PART# 5001-03



## TAG METALS AGRO ATV BUMPER

THE HIGHEST QUALITY OF MATERIALS, CRAFTSMANSHIP AND ENGINEERING ARE UTILIZED TO PRODUCE THE ALL NEW AGRO ATV BUMPER.

- \* AGGRESSIVE RACING DESIGN
- \* HIGH IMPACT MOUNTING BRACKETS FOR MAXIMUM PROTECTION
- \* 6061 ALUMINUM CONSTRUCTION
- \* AVAILABLE IN SILVER/BLACK AND ALL BLACK



PART#	APPLICATION
8502-05	400EX/TRX450R BLK 99-09
8502-08	400EX/TRX450R SIL 99-09
8503-05	Z400/KFX400 BLK 02-09
8503-08	Z400/KFX400 SILR 02-09
8504-05	YFZ 450 BLK 04-09
8504-08	YFZ 450 SILVER 04-09
8506-05	RAPTOR 700 BLACK 06-09
8506-08	RAPTOR 700 SILVER 06-09
8507-05	LTR 450 BLACK 06-09
8507-08	LTR 450 SILVER 06-09
8510-05	KFX 450 BLACK 07-09
8510-08	KFX 450SILVER 07-09
8513-05	CAN AM 450 BLACK 07-09
8513-08	CAN AM 450 SILVER 07-09

# AGRO

## RAILER

POLY-RESIN ATV GLIDE PLATE



PART#	APPLICATION
6010-03	RAPTOR 700 06-09 BLUE
6010-05	RAPTOR 700 06-09 BLACK
6011-03	YFZ450 04-08 BLUE
6011-05	YFZ450 04-08 BLACK
6012-05	RAPTOR 250 06-09 BLACK
6110-05	TRX 450R 06-09 BLACK
6210-05	KFX450 07-09 BLACK
6310-03	LTR450 06-09 BLUE
6310-05	LTR450 06-09 BLACK
6310-03	LTR450 06-09 BLUE
6311-05	LTX400 07-09 BLACK

## TAG METALS RAILER ATV GLIDE PLATE

INNOVATIVE DESIGN, PRECISION ENGINEERING AND CRAFTSMANSHIP ARE UTILIZED TO PRODUCE THE TAG METALS RAILER POLY-RESIN GLIDE PLATE.

- \* INNOVATIVE POLY-RESIN CONSTRUCTION & DESIGN
- \* 50% LIGHTER THAN ALUMINUM CONSTRUCTION
- \* NO RATTLE OR VIBRATION
- \* WILL NOT BEND OR DENT
- \* DEVELOPED BY THE TOP ATV PROFESSIONAL RACERS



## TAG METALS ATV BUMPER

STRENGTH. OUR ATV BUMPERS ARE HAND BUILT FOR THE ULTIMATE FIT, WHILE PROVIDING THE RIDER WITH A LIGHTWEIGHT, FUNCTIONAL AND DURABLE PRODUCT.

- \* HIGH IMPACT UPPER MOUNTING GUSSETS ENSURE THE OPTIMUM PROTECTION FOR YOUR ATV, WHILE PROVIDING CUTTING EDGE DESIGN
- \* HAND WELDED AND CONSTRUCTED FROM 6061 ALUMINUM ALLOY
- \* BLACK OR POLISHED SILVER HIGH QUALITY FINISH

PART#	APPLICATION
8002-05	400EX/TRX 450R BLACK 99-09
8002-08	400EX/TRX 450R SILVER 99-09
8003-05	Z400/KFX400 BLACK 02-09
8003-08	Z400/KFX400 SILVER 02-09
8004-05	YFZ 450 04-09 BLACK
8004-08	YFZ 450 04-09 SILVER
8006-05	RAPTOR 700 BLACK 06-09
8006-08	RAPTOR 700 SILVER 06-09
8010-05	KFX 450 07-09 BLACK
8012-05	RAPTOR 250 BLACK 07-09
8012-08	RAPTOR 250 SILVER 07-09
8013-05	CAN-AM 05450 07-09 BLACK
8018-08	CAN-AM 05450 07-09 SILVER





## TAG METALS CASUALS

- A** ICON TEE, BLACK  
SIZES M, L, XL, XXL  
PART# 3003-530=m, 540=l, 545=xl, 550=xxl
- B** METALS TEE, BLACK  
SIZES M, L, XL, XXL  
PART# 3001-530=m, 540=l, 545=xl, 550=xxl
- C** SCOOTER TEE, BLACK  
SIZES M, L, XL, XXL  
PART# 3002-530=m, 540=l, 545=xl, 550=xxl
- D** TOURIST TEE, BROWN  
SIZES M, L, XL, XXL  
PART# 3006-530=m, 540=l, 545=xl, 550=xxl
- E** RANDOM HOODIE, BLACK  
SIZES L, XL, XXL  
PART# 3000-530=m, 540=l, 545=xl, 550=xxl

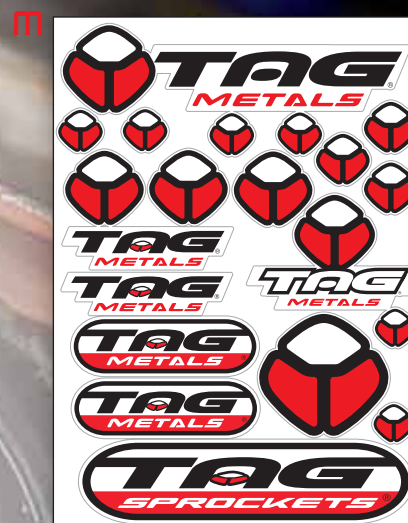
## TAG METALS HATS

- F** TAG LOGO HAT, BLACK  
210 FLEX-FIT SIZES S-M, L-XL  
PART# 1000-520=s/m, 540=l/xl
- G** TAG MONOGRAM HAT, WHITE  
210 FLEX-FIT SIZES S-M, L-XL  
PART# 1001-520=s/m, 540=l/xl
- H** TAG CMYK HAT, BLACK  
210 FLEX-FIT SIZES S-M, L-XL  
PART# 1003-520=s/m, 540=l/xl
- I** TAG MONOGRAM HAT, BLACK  
210 FLEX-FIT SIZES S-M, L-XL  
PART# 1002-520=s/m, 540=l/xl



## TAG METALS UMBRELLAS

- J** TAG LOGO UMBRELLA, GREEN  
OPENS TO 36" DIAMETER  
PART# 2100-06
- K** TAG LOGO UMBRELLA, RED  
OPENS TO 36" DIAMETER  
PART# 2100-02
- L** TAG LOGO UMBRELLA, BLUE  
OPENS TO 36" DIAMETER  
PART# 2100-03



## TAG METALS STICKERS

- M** TAG ASSORTED STICKER SHEET  
PART# 2001-KY
- N** TAG SPROCKETS STICKER  
SIZE: 9", 10 PACK  
PART# 2002-SP



# TAG METALS SPROCKET APPLICATIONS

## FRONT SPROCKETS

HONDA	PART #	DESCRIPTION
	140-420-14	FS CRF150R 07-09 14T
	140-420-15	FS CRF150R 07-09 15T
	100-420-15	FS CRF250 ALL/CR85 86-09 15T
	110-520-13	FS CRF250/CRF 450 02-09 13T
	110-520-14	FS CRF250/CRF 450 02-09 14T
	120-520-13	FS CR125/CRF 250 04-09 13T
	120-520-14	FS CR125/CRF 250 04-09 14T
	130-520-14	FS XR400 96-04 TRX400EX ALL 14T
	130-520-15	FS XR400 96-04 TRX400EX ALL 15T

KAWASAKI	PART #	DESCRIPTION
	150-420-13	FS KX65/85/100 85-09 13T
	150-420-14	FS KX65/85/100 85-09 14T
	160-520-13	FS KX250 99-08 13T
	160-520-14	FS KX250 99-08 14T
	170-520-13	FS KX250F 04-05 13T
	170-520-14	FS KX250F 04-05 14T
	180-520-13	FS KFX400 06-09 13T
	180-520-14	FS KFX400 06-09 14T
	190-520-13	FS KX250F 06-09 13T
	190-520-14	FS KX250F 06-09 14T
	200-520-13	FS KX450F 06-09 13T
	200-520-14	FS KX450F 06-09 14T
	210-520-13	FS KFX 450 06-09 13T
	210-520-14	FS KFX 450 06-09 14T

KTM	PART #	DESCRIPTION
	215-428-14	FS KTM 85 04-09 14T
	220-520-13	FS KTM EXC & SX 88-09 13T
	220-520-14	FS KTM EXC & SX 88-09 14T
	230-420-13	FS KTM 65 98-09 13T
	230-420-14	FS KTM 65 98-09 14T

SUZUKI	PART #	DESCRIPTION
	150-420-13	FS RM 65 85-09 13T
	150-420-14	FS RM 65 85-09 14T
	260-428-14	FS RM 85 02-09 14T
	170-520-13	FS RMZ 250 04-06 13T
	170-520-14	FS RMZ 250 04-06 14T
	180-520-13	LTZ400 LTR450 06-09 13T
	180-520-14	LTZ400 LTR450 06-09 14T
	240-520-12	FS RM 125 ALL/RMZ250 07-09 12T
	240-520-13	FS RM 125 ALL/RMZ250 07-09 13T
	241-520-13	FS RM 250 87-09 13T
	241-520-14	FS RM 250 87-09 14T
	250-520-12	FS RMZ 450 05-09 12T
	250-520-13	FS RMZ 450 05-09 13T
	250-520-14	FS RMZ 450 05-09 14T

YAMAHA	PART #	DESCRIPTION
	260-428-14	FS YZ 85 02-09 14T
	160-520-13	FS YZ250 99-09/YZF450 03-09 & RAPTOR 660 01-05 13T
	160-520-14	FS YZ250 99-09/YZF450 03-09 & RAPTOR 660 01-05 13T 14T
	270-520-12	FS YFZ/WRF250 YZ 125 05-09 12T
	270-520-13	FS YFZ/WRF250 YZ 125 05-09 13T
	270-520-14	FS YFZ/WRF250 YZ 125 05-09 14T
	280-520-13	FS RAPTOR 700 06-09 13T
	280-520-14	FS RAPTOR 700 06-09 14T
	280-520-15	FS RAPTOR 700 06-09 15T

## REAR SPROCKETS

HONDA	DESCRIPTION
PART #	
300-420-49	RS CR85/CRF150 ALL 49T
300-420-50	RS CR85/CRF150 ALL 50T
300-420-51	RS CR85/CRF150 ALL 51T
300-420-52	RS CR85/CRF150 ALL 52T
300-420-53	RS CR85/CRF150 ALL 53T
300-420-54	RS CR85/CRF150 ALL 54T
300-420-55	RS CR85/CRF150 ALL 55T
300-420-56	RS CR85/CRF150 ALL 56T
310-520-48	RS CR/CRF 125/250/450 ALL 48T
310-520-49	RS CR/CRF 125/250/450 ALL 49T
310-520-50	RS CR/CRF 125/250/450 ALL 50T
310-520-51	RS CR/CRF 125/250/450 ALL 51T
310-520-52	RS CR/CRF 125/250/450 ALL 52T
310-520-53	RS CR/CRF 125/250/450 ALL 53T
310-520-54	RS CR/CRF 125/250/450 ALL 54T
315-520-48	RS CR/CRF 125/250/450 ALL 48T
315-520-49	RS CR/CRF 125/250/450 ALL 49T BLACK
315-520-50	RS CR/CRF 125/250/450 ALL 50T BLACK
315-520-51	RS CR/CRF 125/250/450 ALL 51T BLACK
315-520-52	RS CR/CRF 125/250/450 ALL 52T BLACK
320-420-37	RS XR/CRF 50 00-09 37T
320-420-38	RS XR/CRF 50 00-09 38T
330-520-36	RS TRX250/400EX/TRX450R 36T
330-520-37	RS TRX250/400EX/TRX450R 37T
330-520-38	RS TRX250/400EX/TRX450R 38T
330-520-39	RS TRX250/400EX/TRX450R 39T
330-520-40	RS TRX250/400EX/TRX450R 40T

KAWASAKI	DESCRIPTION
PART #	
360-420-46	RS KX65 04-09 46T
360-420-47	RS KX65 04-09 47T
360-420-48	RS KX65 04-09 48T
340-420-49	RS KX 85/100 00-09 49T
340-420-50	RS KX 85/100 00-09 50T
340-420-51	RS KX 85/100 00-09 51T
340-420-52	RS KX 85/100 00-09 52T
350-520-47	RS KX125/250/250F/450F ALL 47T
350-520-48	RS KX125/250/250F/450F ALL 48T
350-520-49	RS KX125/250/250F/450F ALL 49T
350-520-50	RS KX125/250/250F/450F ALL 50T
350-520-51	RS KX125/250/250F/450F ALL 51T
350-520-52	RS KX125/250/250F/450F ALL 52T
350-520-53	RS KX125/250/250F/450F ALL 53T
355-520-48	RS KX125/250/250F/450F ALL 48T BLACK
355-520-49	RS KX125/250/250F/450F ALL 49T BLACK
355-520-50	RS KX125/250/250F/450F ALL 50T BLACK
355-520-51	RS KX125/250/250F/450F ALL 51T BLACK
355-520-52	RS KX125/250/250F/450F ALL 52T BLACK
370-520-37	RS KFX400 03-09 37T
370-520-38	RS KFX400 03-09 38T
370-520-39	RS KFX400 03-09 39T
370-520-40	RS KFX400 03-09 40T
370-520-41	RS KFX400 03-09 41T
370-520-42	RS KFX400 03-09 42T
380-520-37	RS KFX450 06-09 37T
380-520-38	RS KFX450 06-09 38T
380-520-39	RS KFX450 06-09 39T

KTM	DESCRIPTION
PART #	
390-420-48	RS KTM 85 03-09 48T
390-420-49	RS KTM 85 03-09 49T
390-420-50	RS KTM 85 03-09 50T
390-420-51	RS KTM 85 03-09 51T
390-420-52	RS KTM 85 03-09 52T
400-520-48	RS KTM EXC/SX 91-09 48T
400-520-49	RS KTM EXC/SX 91-09 49T
400-520-50	RS KTM EXC/SX 91-09 50T
400-520-51	RS KTM EXC/SX 91-09 51T
400-520-52	RS KTM EXC/SX 91-09 52T
400-520-53	RS KTM EXC/SX 91-09 53T
405-520-48	RS KTM EXC/SX 91-09 48T BLACK
405-520-49	RS KTM EXC/SX 91-09 49T BLACK
405-520-50	RS KTM EXC/SX 91-09 50T BLACK
405-520-51	RS KTM EXC/SX 91-09 51T BLACK
405-520-52	RS KTM EXC/SX 91-09 52T BLACK
410-420-48	RS KTM 65 00-09 48T
410-420-49	RS KTM 65 00-09 49T

SUZUKI	DESCRIPTION
PART #	
440-428-46	RS RM85 83-09 46T
440-428-47	RS RM85 83-09 47T
440-428-48	RS RM85 83-09 48T
440-428-49	RS RM85 83-09 49T
440-428-50	RS RM85 83-09 50T
440-428-51	RS RM85 83-09 51T
440-428-52	RS RM85 83-09 52T
440-428-53	RS RM85 83-09 53T
440-428-54	RS RM85 83-09 54T
420-520-47	RS RM/RMZ/DRZ/RMX125/250/450 47T
420-520-48	RS RM/RMZ/DRZ/RMX125/250/450 48T
420-520-49	RS RM/RMZ/DRZ/RMX125/250/450 49T
420-520-50	RS RM/RMZ/DRZ/RMX125/250/450 50T
420-520-51	RS RM/RMZ/DRZ/RMX125/250/450 51T
420-520-52	RS RM/RMZ/DRZ/RMX125/250/450 52T
420-520-53	RS RM/RMZ/DRZ/RMX125/250/450 53T
425-520-48	RS RM/RMZ/DRZ/RMX125/250/450 48T BLACK
425-520-49	RS RM/RMZ/DRZ/RMX125/250/450 49T BLACK
425-520-50	RS RM/RMZ/DRZ/RMX125/250/450 50T BLACK
425-520-51	RS RM/RMZ/DRZ/RMX125/250/450 51T BLACK
425-520-52	RS RM/RMZ/DRZ/RMX125/250/450 52T BLACK
425-530-49	RS RM/RMZ/DRZ/RMX125/250/450 49T BLACK
430-520-36	RS LTR450 06-09 36T
430-520-37	RS LTR450 06-09 37T
430-520-38	RS LTR450 06-09 38T
430-520-39	RS LTR450 06-09 39T
320-520-52	RS RMZ250 04-06 52T
350-520-47	RS RMZ250 04-06 47T
350-520-48	RS RMZ250 04-06 48T
350-520-49	RS RMZ250 04-06 49T
350-520-50	RS RMZ250 04-06 50T
350-520-51	RS RMZ250 04-06 51T
350-520-52	RS RMZ250 04-06 52T
350-520-53	RS RMZ250 04-06 53T
355-520-48	RS RMZ250 04-06 48T BLACK
355-520-49	RS RMZ250 04-06 49T BLACK
355-520-50	RS RMZ250 04-06 50T BLACK
355-520-51	RS RMZ250 04-06 51T BLACK
355-520-52	RS RMZ250 04-06 52T BLACK
370-520-37	RS LTZ400 03-09 37T
370-520-38	RS LTZ400 03-09 38T
370-520-39	RS LTZ400 03-09 39T
370-520-40	RS LTZ400 03-09 40T
370-520-41	RS LTZ400 03-09 41T
370-520-42	RS LTZ400 03-09 42T

YAMAHA	DESCRIPTION
PART #	
440-428-46	RS YZ85 03-08 46T
440-428-47	RS YZ85 03-08 47T
440-428-48	RS YZ85 03-08 48T
440-428-49	RS YZ85 03-08 49T
440-428-50	RS YZ85 03-08 50T
440-428-51	RS YZ85 03-08 51T
440-428-52	RS YZ85 03-08 52T
440-428-53	RS YZ85 03-08 53T
440-428-54	RS YZ85 03-08 54T
450-520-47	RS YZ/YZF/WRF 125-450 ALL 47T
450-520-48	RS YZ/YZF/WRF 125-450 ALL 48T
450-520-49	RS YZ/YZF/WRF 125-450 ALL 49T
450-520-50	RS YZ/YZF/WRF 125-450 ALL 50T
450-520-51	RS YZ/YZF/WRF 125-450 ALL 51T
450-520-52	RS YZ/YZF/WRF 125-450 ALL 52T
450-520-53	RS YZ/YZF/WRF 125-450 ALL 53T
455-520-48	RS YZ/YZF/WRF 125-450 ALL 48T BLACK
455-520-49	RS YZ/YZF/WRF 125-450 ALL 49T BLACK
455-520-50	RS YZ/YZF/WRF 125-450 ALL 50T BLACK
455-520-51	RS YZ/YZF/WRF 125-450 ALL 51T BLACK
455-520-52	RS YZ/YZF/WRF 125-450 ALL 52T BLACK
460-520-38	RS BLST/WAR/BNSH/RAPT660 38T
460-520-39	RS BLST/WAR/BNSH/RAPT660 39T
460-520-40	RS BLST/WAR/BNSH/RAPT660 40T
460-520-41	RS BLST/WAR/BNSH/RAPT660 41T
460-520-42	RS BLST/WAR/BNSH/RAPT660 42T
470-520-37	RS YFZ450 04-09/RAPTOR 700 37T
470-520-38	RS YFZ450 04-09/RAPTOR 700 38T
470-520-39	RS YFZ450 04-09/RAPTOR 700 39T
470-520-40	RS YFZ450 04-09/RAPTOR 700 40T



# TAG METALS HANDLEBAR APPLICATIONS

## XT-1 OVERSIZE BRACED HANDLEBAR

PART #	DESCRIPTION	A	B	C	D	E	COLOR
6092-05	XT1 OS BAR HON/KAW/RC (971)HI	802	119	80	200	54	BLACK
7222-05	XT1 OS BAR CRHI/KTM/ATV BEND	795	95	70	205	62	BLACK
9662-05	XT1 OS BAR YAMAHA BEND	803	92	56	210	57	BLACK
9712-05	XT1 OS BAR HON/KAW/RC/FAC BEND	802	99	65	200	54	BLACK

## T2 OVERSIZE BRACE LESS HANDLEBAR

PART #	DESCRIPTION	A	B	C	D	E	COLOR
6091-05	T2 OS BAR HON/KAW/RC (971) HI	802	119	80	200	54	BLACK
6091-08	T2 OS BAR HON/KAW/RC (971) HI	802	119	80	200	54	SILVER
6091-20	T2 OS BAR HON/KAW/RC (971) HI	802	119	80	200	54	NITRIDE
7221-05	T2 OS BAR CRHI/KTM/ATV BEND	795	95	70	205	62	BLACK
7221-08	T2 OS BAR CRHI/KTM/ATV BEND	795	95	70	205	62	SILVER
7221-20	T2 OS BAR CRHI/KTM/ATV BEND	795	95	70	205	62	NITRIDE
7841-05	T2 OS BAR MINI RACER BEND	740	118	83	175	42	BLACK
7841-08	T2 OS BAR MINI RACER BEND	740	118	83	175	42	SILVER
7901-05	T2 OS BAR CRLO BEND BLACK	796	80	55	210	57	BLACK
7901-08	T2 OS BAR CRLO BEND SILVER	796	80	55	210	57	SILVER
7901-20	T2 OS BAR CRLO BEND NITRIDE	796	80	55	210	57	NITRIDE
9711-05	T2 OS BAR HON/KAW/RC/FAC BEND	802	99	65	200	54	BLACK
9711-08	T2 OS BAR HON/KAW/RC/FAC BEND	802	99	65	200	54	SILVER
9711-20	T2 OS BAR HON/KAW/RC/FAC BEND	802	99	65	200	54	NITRIDE
9661-05	T2 OS BAR YAMAHA BEND	803	92	56	210	57	BLACK
9661-08	T2 OS BAR YAMAHA BEND	803	92	56	210	57	SILVER
9661-20	T2 OS BAR YAMAHA BEND	803	92	56	210	57	NITRIDE

## X-5 STANDARD 7/8 HANDLEBAR

PART #	DESCRIPTION	A	B	C	D	E	COLOR
6090-05	XS BAR HON/KAW/RC (971) HI	802	119	80	200	54	BLACK
6090-08	XS BAR HON/KAW/RC (971) HI	802	119	80	200	54	SILVER
7220-05	XS BAR CRHI/KTM/ATV/YFZ/KFX	795	95	70	205	62	BLACK
7220-08	XS BAR CRHI/KTM/ATV/YFZ/KFX	795	95	70	205	62	SILVER
7900-05	XS BAR CRLO BEND	796	80	55	210	57	BLACK
7900-08	XS BAR CRLO BEND	796	80	55	210	57	SILVER
9660-05	XS BAR YAMAHA BEND BLACK	803	92	56	210	57	BLACK
9660-08	XS BAR YAMAHA BEND SILVER	803	92	56	210	57	SILVER
6060-05	XS BAR MINI RACER HI BEND	797	132	112	170	63	BLACK
6060-08	XS BAR MINI RACER HI BEND	797	132	112	170	63	SILVER
7700-05	XS BAR PLAYBIKE BEND	722	185	170	160	42	BLACK
7700-08	XS BAR PLAYBIKE BEND	722	185	170	160	42	SILVER
7840-05	XS BAR MINI RACER BEND	740	118	83	175	42	BLACK
7840-08	XS BAR MINI RACER BEND	740	118	83	175	42	SILVER
9710-05	XS BAR HON/KAW/RC/FAC BEND	802	99	65	200	54	BLACK
9710-08	XS BAR HON/KAW/RC/FAC BEND	802	99	65	200	54	SILVER
6070-05	XS BAR RAPTOR/BANSHEE BEND	785	140	105	155	100	BLACK
6070-08	XS BAR RAPTOR/BANSHEE BEND	785	140	105	155	100	SILVER
7810-05	XS BAR ATV RACER BEND	806	150	85	205	75	BLACK
7810-08	XS BAR ATV RACER BEND	806	150	85	205	75	SILVER
7870-05	XS BAR ATV EX/HON450/SUZ LTZ	790	142	105	200	90	BLACK
7870-08	XS BAR ATV EX/HON450/SUZ LTZ	790	142	105	200	90	SILVER



## TAG HANDLEBAR DIMENSIONS

